

TAYLOR PARK

Weddin Street, Grenfell NSW 2810

TENDER DOCUMENTATION - HARDWORKS

sala4D

landscape architecture · urban design

LANDSCAPE ARCHITECT

© sala4D 2024 All rights reserved.

Master Drawing Schedule

Number	Title	Area	Revision	Issue Date
L-000	COVER SHEET	FULL SITE	D	24/02/2025
L-001	MASTERPLAN	FULL SITE	-	18/12/2024
L-100	SITE PLAN	1	-	18/12/2024
L-101	SITE PLAN	2	-	18/12/2024
L-102	SITE PLAN	3	A	29/01/2025
L-103	SITE PLAN	4	-	18/12/2024
L-200	TREE REMOVAL AND DEMOLITION PLAN	1	-	18/12/2024
L-201	TREE REMOVAL AND DEMOLITION PLAN	2	-	18/12/2024
L-202	TREE REMOVAL AND DEMOLITION PLAN	3	-	18/12/2024
L-203	TREE REMOVAL AND DEMOLITION PLAN	4	-	18/12/2024
L-300	SURFACE FINISHES, GRADING AND SETOUT PLAN	1	-	18/12/2024
L-301	SURFACE FINISHES, GRADING AND SETOUT PLAN	2	B	24/02/2025
L-302	SURFACE FINISHES, GRADING AND SETOUT PLAN	3	A	29/01/2025
L-303	SURFACE FINISHES, GRADING AND SETOUT PLAN	4	B	24/02/2025
L-600	LANDSCAPE DETAILS	-	-	18/12/2024
L-601	LANDSCAPE DETAILS	-	-	18/12/2024
L-602	LANDSCAPE DETAILS	-	-	18/12/2024
L-603	LANDSCAPE DETAILS	-	-	18/12/2024
L-604	LANDSCAPE DETAILS	-	-	18/12/2024



KEY PLAN

DATE	DESCRIPTION	REV
13/01/25	Revised tender	A
29/01/25	Revised tender	B
18/02/25	Revised tender	C
24/02/25	Revised tender	D
-	-	-
-	-	-
-	-	-
-	-	-
-	-	-
-	-	-

REVISIONS

Weddin Shire Council
73 Camp Street
Grenfell, NSW 2810

CLIENT

ARCHITECT

TAYLOR PARK
Weddin Street
Grenfell, NSW 2810

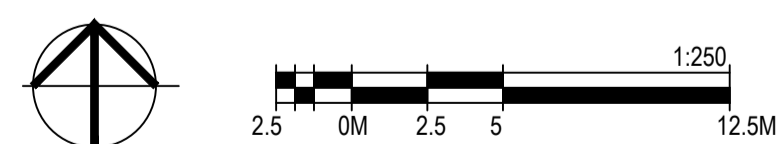
PROJECT

TENDER
DOCUMENTATION

PURPOSE OF DRAWING

HARDWORKS
COVER SHEET

DRAWING TITLE



NORTH SCALE BAR

SCALE	AS SHOWN @ A1	DRAWN BY	XS
DATE	24/02/2025	CHECKED BY	SA
JOB NO.	-	APPROVED BY	SA

DRAWING NO.	REVISION
L-000	D

DRAWING INFORMATION