

# TAYLOR PARK

Weddin Street, Grenfell NSW 2810

## TENDER DOCUMENTATION - HARDWORKS

**sala4D**

landscape architecture · urban design

LANDSCAPE ARCHITECT

© sala4D 2024 All rights reserved.

### Master Drawing Schedule

Number	Title	Area	Revision	Issue Date
L-000	COVER SHEET	FULL SITE	C	18/02/2025
L-001	MASTERPLAN	FULL SITE	-	18/12/2024
L-100	SITE PLAN	1	-	18/12/2024
L-101	SITE PLAN	2	-	18/12/2024
L-102	SITE PLAN	3	A	29/01/2025
L-103	SITE PLAN	4	-	18/12/2024
L-200	TREE REMOVAL AND DEMOLITION PLAN	1	-	18/12/2024
L-201	TREE REMOVAL AND DEMOLITION PLAN	2	-	18/12/2024
L-202	TREE REMOVAL AND DEMOLITION PLAN	3	-	18/12/2024
L-203	TREE REMOVAL AND DEMOLITION PLAN	4	-	18/12/2024
L-300	SURFACE FINISHES, GRADING AND SETOUT PLAN	1	-	18/12/2024
L-301	SURFACE FINISHES, GRADING AND SETOUT PLAN	2	A	18/02/2025
L-302	SURFACE FINISHES, GRADING AND SETOUT PLAN	3	A	29/01/2025
L-303	SURFACE FINISHES, GRADING AND SETOUT PLAN	4	A	18/02/2025
L-600	LANDSCAPE DETAILS	-	-	18/12/2024
L-601	LANDSCAPE DETAILS	-	-	18/12/2024
L-602	LANDSCAPE DETAILS	-	-	18/12/2024
L-603	LANDSCAPE DETAILS	-	-	18/12/2024
L-604	LANDSCAPE DETAILS	-	-	18/12/2024



### KEY PLAN

DATE	DESCRIPTION	REV
13/01/25	Revised tender	A
29/01/25	Revised tender	B
18/02/25	Revised tender	C
-	-	-
-	-	-
-	-	-
-	-	-
-	-	-
-	-	-

### REVISIONS

Weddin Shire Council  
73 Camp Street  
Grenfell, NSW 2810

### CLIENT

### ARCHITECT

TAYLOR PARK  
Weddin Street  
Grenfell, NSW 2810

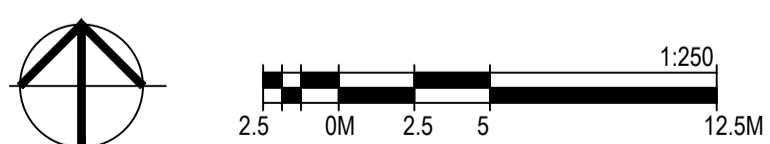
### PROJECT

## TENDER DOCUMENTATION

### PURPOSE OF DRAWING

HARDWORKS  
COVER SHEET

### DRAWING TITLE



### NORTH SCALE BAR

SCALE	AS SHOWN @ A1	DRAWN BY	XS
DATE	18/02/2025	CHECKED BY	SA
JOB NO.	-	APPROVED BY	SA

DRAWING NO.	REVISION
L-000	C

### DRAWING INFORMATION